

Hypnofish

By Raymond Tucker (screen name "letungo")



Materials Used

Eyes – Hand Painted Flat End Hour Glass Eyes/Size Medium

Craft Paint – Yellow and Black Acrylic Paint (Indoor/Outdoor)

Epoxy – Devcon 5 Minute Clear Epoxy

Hook - Daiichi 2220/Size 8 (or equivalent)

Thread - White 6/0 UNI-Thread

Tail - Cream Colored Marabou (tyed long to give pattern more motion on the retrieve)

Body - Large Holographic Crystal Chenille

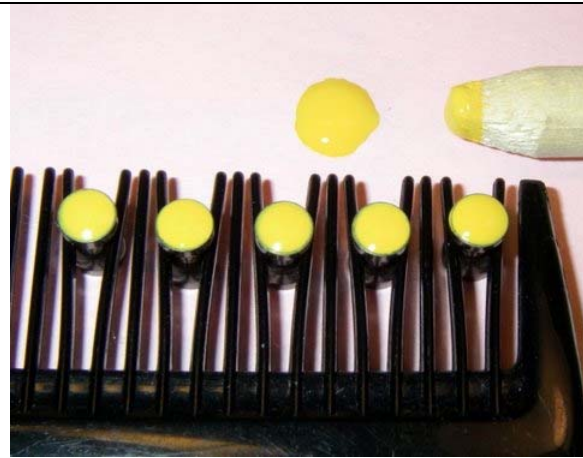
Hand Painting the Eyes

The eyes on these flies are the most time consuming part, but I like the look of the flies

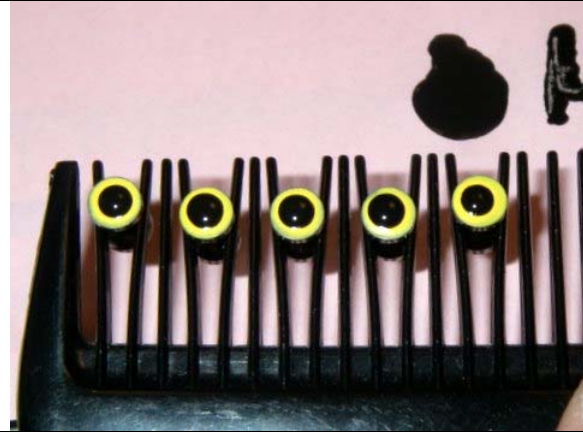


Insert the metal eyes in between the teeth of a comb. This allows you to handle and paint multiple sets of eyes all at the same time. The body of the comb acts as a nice handle while the eyes are being painted. Once one side to the eyes are painted, simply flip the comb over and paint the second side. I have rigged up a small clip on the side of my tying bench to hold the comb while the eyes dry.

Squirt a small amount of yellow paint onto a Post-It note and paint the ends of the eyes with a small sharpened wooden dowel.



After the yellow paint has dried, paint the iris of the eyes with black craft paint. Use a smaller dowel when painting the irises.



Here are the dried eyes ready for the epoxy step. You can see finished eyes in the background of the photo.

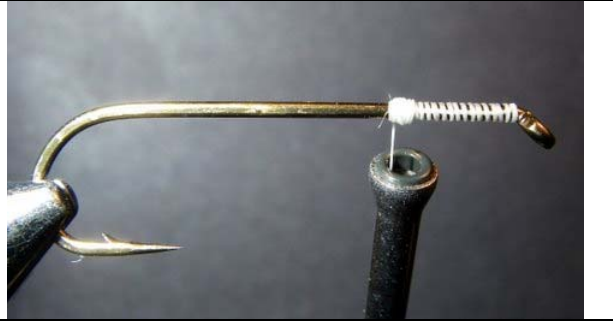


Mix up a small batch of 5 minute epoxy and coat both sides of the eyes. After the first coat of epoxy have cured, give the eyes a second coat of epoxy and allow them to fully cure.



Instructions for Tying the Fly

Mount your tying thread and wind the thread roughly 1/3rd of the way towards the bend of the hook.



Form a small bump of thread at this point which will help hold the eyes in place and help keep them from slipping.



Tye the eyes on just in front of the small thread bump. The easiest way to mount the eyes is to lay them against the side of the hook at roughly a 45° angle to the horizontal hook shank. Then wrap the thread five times over the eyes and rotate them into place at the top of the hook shank. Now make five tight wraps in the other direction which will help pull the eyes straight.



Cross wrap the thread in each direction and wrap around under the base of the eyes to lock them in place. You could add a little bit of Super Glue to the thread wraps if you want to make sure the eyes are locked in place.



Tye in a small bundle of marabou. Tye it in right behind the back of the eyes and wrap your thread back to the bend of the hook and return wraps to the eyes.



Tye in the body material, again starting just behind the back of the eyes. Wrap the tying thread back to the bend of the hook and all the front of the hook.

Tying in the marabou and the body material in this way helps keep the body of the fly very uniform.



Wrap the body material forward in tight wraps. When you get to the eyes, crisscross wrap the body material and then around the front of the fly. Whip finish and clip off the tying thread.

Trim the body of the fly to form a nice taper towards the back of the fly. This shape will suggest the outline of a small baitfish.

Use a Sharpie Marker to vary the of the fly. Remember that this fly is going to ride hook point up, so be sure to color the correct side.

